

BiblioTECH Library System

Version 8

SIP-2[®] Interface Manual

Contents

What is the BiblioTECH SIP-2 Interface ?	3
Installation Prerequisites	3
“Self Check” Device Settings	3
The <i>BiblioTECH SIP-2 Interface</i>	4
Installing the BiblioTECH SIP-2 Interface	4
The BiblioTECH SIP-2 Interface Manager	4

What is the BiblioTECH SIP-2 Interface ?

The *BiblioTECH SIP-2 Interface* is standard Microsoft Windows service. This service is not included in the standard BiblioTECH Core Server installation. A specific SETUP utility can be downloaded via the BiblioTECH web site and must be installed on a BiblioTECH Library Server computer.

The *BiblioTECH SIP-2 Interface* provides an interface to “SIP-2” compliant auto Check IN/OUT equipment.

Installation Prerequisites

- The *BiblioTECH SIP-2 Interface* SETUP executable
(download from www.bibliotech.com.au)
- A “current” BiblioTECH License Key
(contact admin@bibliotech.com.au)
- An operational BiblioTECH Version 8 Server
- A Windows “Administrative Level” UserID & password

“Self Check” Device Settings

The “*self check*” device/computer needs to be configured to communicate with the BiblioTECH server.

- Configure the “*self check*” device/computer to have a STATIC IP address
- Adjust Network communications ...
 - Use “SOCKET” mode
 - Enter the BiblioTECH server’s IP address
 - Enter the port to be used for communications
- Ensure SIP-Error-Checking is OFF
- Ensure any Firewall on the “self-check” device/computer or along the network path allows traffic on the selected communications port.

The *BiblioTECH* SIP-2 Interface

Installing the *BiblioTECH* SIP-2 Interface

Download and save the *BiblioTECH* SIP-2 Interface SETUP executable to a convenient folder on the BiblioTECH Server computer and run it. Accept all default options.

NB Do NOT install via a network drive – this will significantly slow down the installation process.

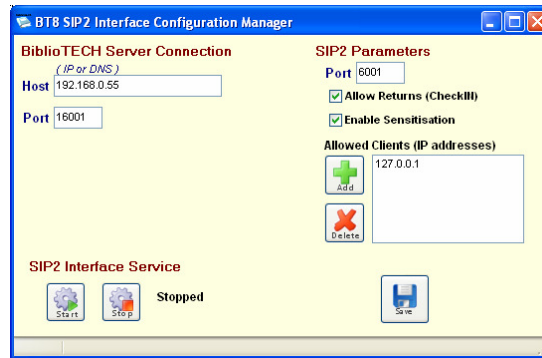
The *BiblioTECH* SIP-2 Interface Configuration Manager

The SIP-2 Interface Configuration Manager is used to adjust the connection parameters used by the SIP-2 Interface.

NB Before starting the SIP-2 Interface for the first time, you must configure the SIP-2 Interface options.

If the service is started and is NOT configured appropriately, the service will stop.

Start the manager (Start → Programs → BiblioTECH V8 → BiblioTECH SIP-2 Interface Configuration Manager).



BiblioTECH Server Connection

Enter the BiblioTECH server's

- IP address/DNS name (if local, enter 127.0.0.1 or localhost)
- Communications Port (default is 16001)

SIP Parameters

Enter the SIP-2 Interface Port (default is 6001)

Choose the options to suit your requirements

- Allow Returns (this allows the equipment to process Returns)
- Enable Sensitisation

Allow Clients (IP addresses)

To enhance security, the BiblioTECH SIP-2 Interface will only accept connections from specific IP addresses. You need to ensure that each device has a static IP address and these are entered here.

Once you have adjusted the entries, you will need to click on the [Save] button to record the changes.

Service Management

In order for the SIP-2 Interface to adopt these new configuration settings, you will need to STOP, then START the service.

NB The Configuration Manager provides buttons to stop and start the service

Application Mode

The BiblioTECH SIP-2 Interface normally runs as a Microsoft Windows service. However, it can be run as an application which is useful when debugging communications issues.

In application mode, the Interface displays a “console” window and outputs requests and responses as lines of text.

To start the Interface in application mode ...

- Stop the BiblioTECH SIP-2 Interface service
- Locate the service executable
C:\Program Files\BiblioTECH\v8\Server\BT8_SIP-2.exe
- Double click the executable

Remember to close the interface and restart the service when debugging is complete