

BibliOTECH Library System

Version 8

“WebLinksTM, <File> External Search Engine Manual

[This page intentionally left blank]

Table of Contents

Note: This manual is being continually updated – the latest version is available via our web site

What is the BibliOTECH “WebLinks” External Search Engine?.....	4
Installation Prerequisites.....	4
Installing and Configuring the External Search Engine.....	5
“Weblinks” Configuration.....	5
Installing and Configuring the BibliOTECH “WebLinks” External Search Engine.....	5
The BibliOTECH “WebLinks” External Search Engine Manager.....	5
BibliOTECH Server Communications.....	5
Select File.....	5
“Port”.....	5
“Library”.....	5
[Save].....	5
Accessing “WebLinks” Media via BibliOTECH.....	6

What is the BiblioTECH “WebLinks” External Search Engine?

The BiblioTECH “WebLinks <File>” External Search Engine provides BiblioTECH users with federated searching of the “WebLinks” data.

“WebLinks” is a product which provides a list of web URLs that are applicable to schools.
For details refer to their website <http://www.weblinksresearch.com>.

Note : There are two different subscription for Weblinks – Monthly File & API

This document refers to the “**File**” subscription
There is a separate engine that can process the API subscription

By using the BiblioTECH “WebLinks <File>” External Search Engine, library users will be able to search for and then hot-link to the target websites.

The BiblioTECH “WebLinks <File>” External Search Engine is standard Windows Service.

This Engine is not included in the core BiblioTECH Server installation. However, if needed, it can be downloaded via the BiblioTECH web site and installed on your BiblioTECH Server computer.

Installation Prerequisites

- The BiblioTECH “WebLinks” External Search Engine SETUP executable
(download from www.bibliotech.com.au)
- A BiblioTECH Version 8 System
- A Windows “Administrative Level” UserID & password
- A subscription to the LinksPlus “WebLinks <File>” product
- One of the monthly Weblinks data files

Installing and Configuring the External Search Engine

Note : You should only install one of the BiblioTECH “Weblinks” Search Engines

“Weblinks” Configuration

Subscribers to this service are able to download a “full” file or an “update” file. The BiblioTECH External Search Engine requires the *full* file.

Create a folder on the server (eg c:\WebLinksData) and save the file there.

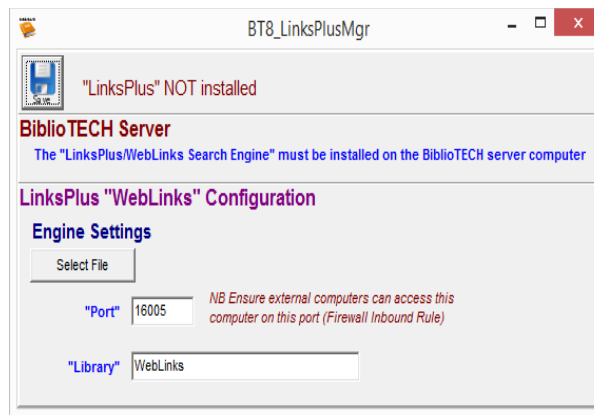
Installing and Configuring the BiblioTECH “WebLinks” External Search Engine

Download and copy the BiblioTECH “WebLinks” External Search Engine SETUP executable to the BiblioTECH Server computer and run it. Accept all default options.

Bibliotech “WebLinks” External Search Engine Manager

Start the manager

(Start → Programs → BiblioTECH V8 → BiblioTECH WebLinks External Search Engine Manager)



[Save]

When you have updated the settings, you need to click on the [Save] button. This will save the settings then restart the “WebLinks” External Search Engine service.

[Select File]

Use this option to tell the External Search Engine where the “WebLinks” data file is located.

“Port”

This is the IP port used by the BiblioTECH server to connect and perform the searching of the WebLinks data.

“Library”

When a search is performed, results from this engine will be reported as in this “library”

Accessing “WebLinks” Media via BiblioTECH

When the external search engine starts up, it will register itself with the BiblioTECH server.

When a Search client is started, it will check to see which engines are available. If any external engines are registered, Search will display a selectable list of these – you can search all or any combination of these engines.

Note : If you turn all engines OFF, the system will default to searching ALL engines.

Once the “WebLinks <API>” External Search Engine is operational, the “WebLinks” information will be fully searchable via the BiblioTECH Search module. If a “WebLinks” entry is found, the linked program can be started in a browser by switching to “Detailed View” and clicking on the URL link.