

BiblioTECH Library System

Version 8

“ClickViewTM, External Search Engine Manual

[This page intentionally left blank]

Table of Contents

Note: This manual is being continually updated – the latest version is available via our web site

What is the BiblioTech “ClickView” External Search Engine?.....	4
Installation Prerequisites	4
Installing and Configuring the External Search Engine	4
“ClickView” Server Configuration	4
Transfer of the “ClickView” XML file.....	4
Installing the BiblioTech “CLICKVIEW” External Search Engine	5
The BiblioTECH “CLICKVIEW External Search Engine” Manager	5
BiblioTECH Server Communications	5
Select File	5
Port	5
“Display” Name.....	5
[Save].....	5
Accessing “ClickView” Media via BiblioTECH	6

What is the BiblioTech “ClickView” External Search Engine?

The BiblioTech “CLICKVIEW” External Search Engine is standard Windows Service. This External Search Engine is not included in the core BiblioTECH Server installation. However, if needed, it can be downloaded from the BiblioTECH web site and installed.

“ClickView” is a product which provides for the online storage of electronic audio-visual files and the playing of those files via their player or via browser integration.

By using the BiblioTECH “ClickView” External Search Engine, library users will be able to search and then view the “ClickView” programs (via the “ClickView” web interface).

Installation Prerequisites

- The BiblioTECH “ClickView” External Search Engine SETUP executable (download from www.bibliotech.com.au)
- A BiblioTECH Version 8 System
- A Windows “Administrative Level” UserID & password

Installing and Configuring the External Search Engine

“ClickView” Server Configuration

A “ClickView” server can export cataloguing information about each resource to an XML file. This “ClickView” export option must be installed and configured to allow the “ClickView” server to produce the XML file.

Once configured and started, the “ClickView” system will automatically generate a new XML file every day.

NB Please refer to the “ClickView” manuals or their website for full details relating to the setting up of the XML export.

Transfer of the “ClickView” XML file

The XML file generated by the “ClickView” system will be saved to a local drive on the “ClickView” server. This file will need to be copied (via a scheduled operation) to the BiblioTECH Server.

There are numerous ways this can be achieved, the following is one method.

NB The following assumes that the computer name of the BiblioTECH Library Server is LIBRARY, and CLICKVIEW will save the XML file in the folder c:\ClickViewExport

On the BiblioTECH Server

- create a new folder C:\ClickViewData
- share this folder as CLICKVIEW\$

On the “CLICKVIEW” Server

- create a command script file (C:\ClickViewExport\copyXML.cmd) containing

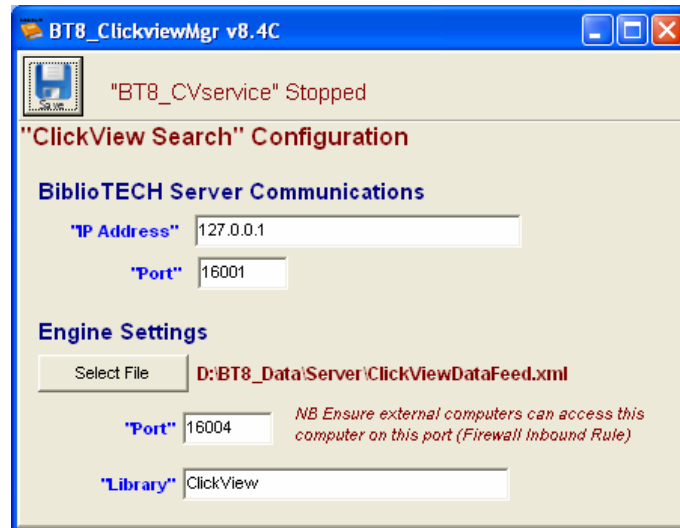
```
net use x: /d
net use x: \\library\CLICKVIEW$
copy c:\ClickViewExport\*.xml x:\ /V /Y
net use x: /d
```
- schedule the command script file to run every day at 1:15am

Installing the BiblioTech “CLICKVIEW” External Search Engine

Download and copy the BiblioTECH “CLICKVIEW” External Search Engine SETUP executable to the server and run it. Accept all default options.

The BiblioTECH “CLICKVIEW External Search Engine” Manager

Start the manager (Start → Programs → BiblioTECH V8 → BiblioTECH CLICKVIEW External SearchEngine Manager).



BiblioTECH Server Communications

Enter the IP address and Port where the External Search Engine contact the BiblioTECH server.

Select File

Use this option to tell the “ClickView” External Search Engine where the ClickView data file is located.

Port

This is the IP port used by the BiblioTECH Search modules to communicate with the Search Engine.

“Display” Name

When a Search module successfully retrieves results from the “ClickView” Search Engine, this is the name displayed in Search in the ‘Library’ column

[Save]

When you have updated the settings, you need to click on the [Save] button. This will save the settings then restart the “ClickView” External Search Engine service.

Accessing “ClickView” Media via BiblioTECH

Once the “ClickView” External Search Engine is operational, the “ClickView” information will be fully searchable via the BiblioTECH Search module. If a “ClickView” entry is found, the linked program can be started in a browser by switching the Detailed View and clicking on the URL link.

NB Refer to the BiblioTECH Users Manual for information relating to using the Search module.